

Influence of mechanical activation and heat treatment on magnetic properties of nanostructured mixture $\text{Ni}_{85.8}\text{Fe}_{10.6}\text{Cu}_{2.2}\text{W}_{1.4}$

Supplementary data

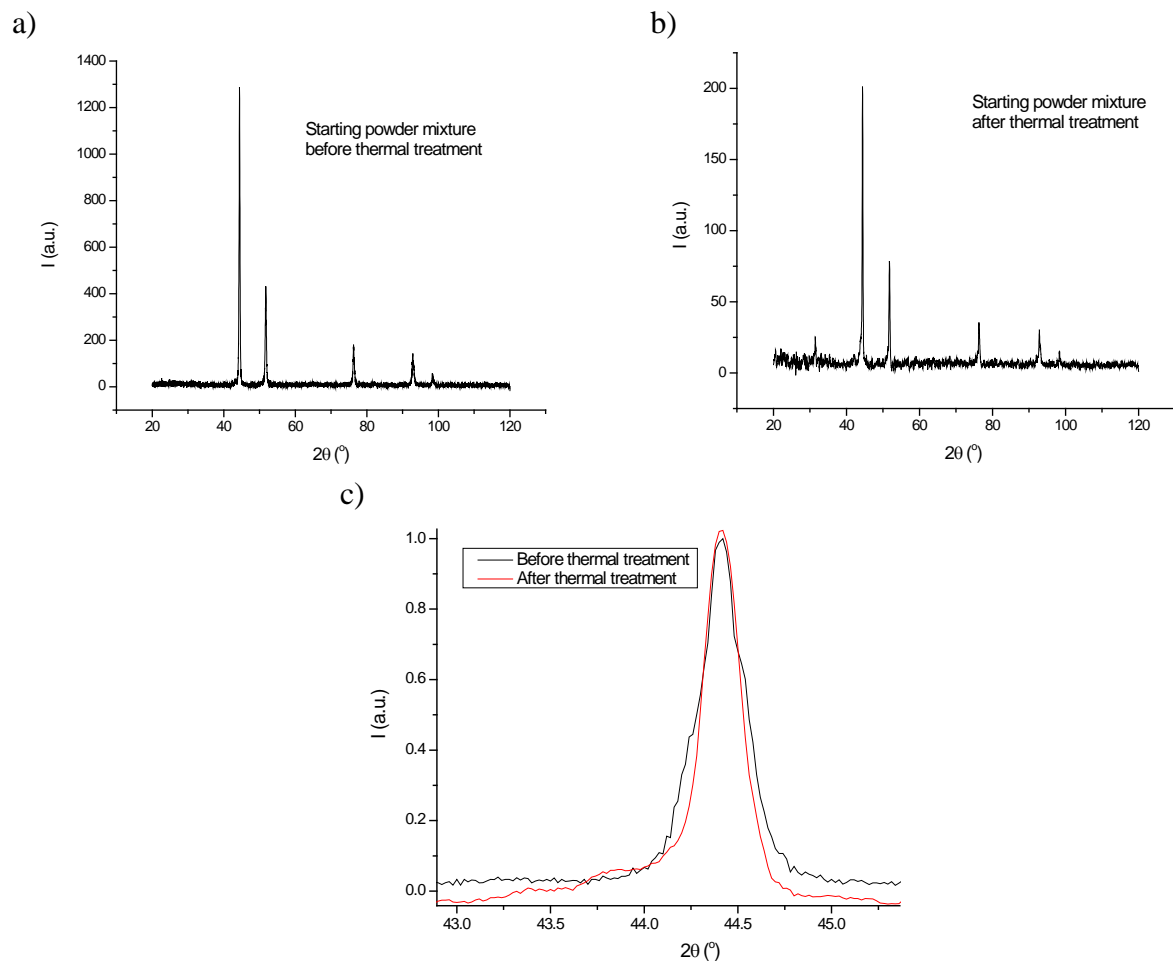


Figure S1. XRD patterns of the starting NiFeWCu powder mixture before (a) and after (b) thermal treatment in the temperature range from room temperature up to 1293 K, and enhanced region of the XRD peak at 2θ around 44.5° (normalized XRD patterns) (c).

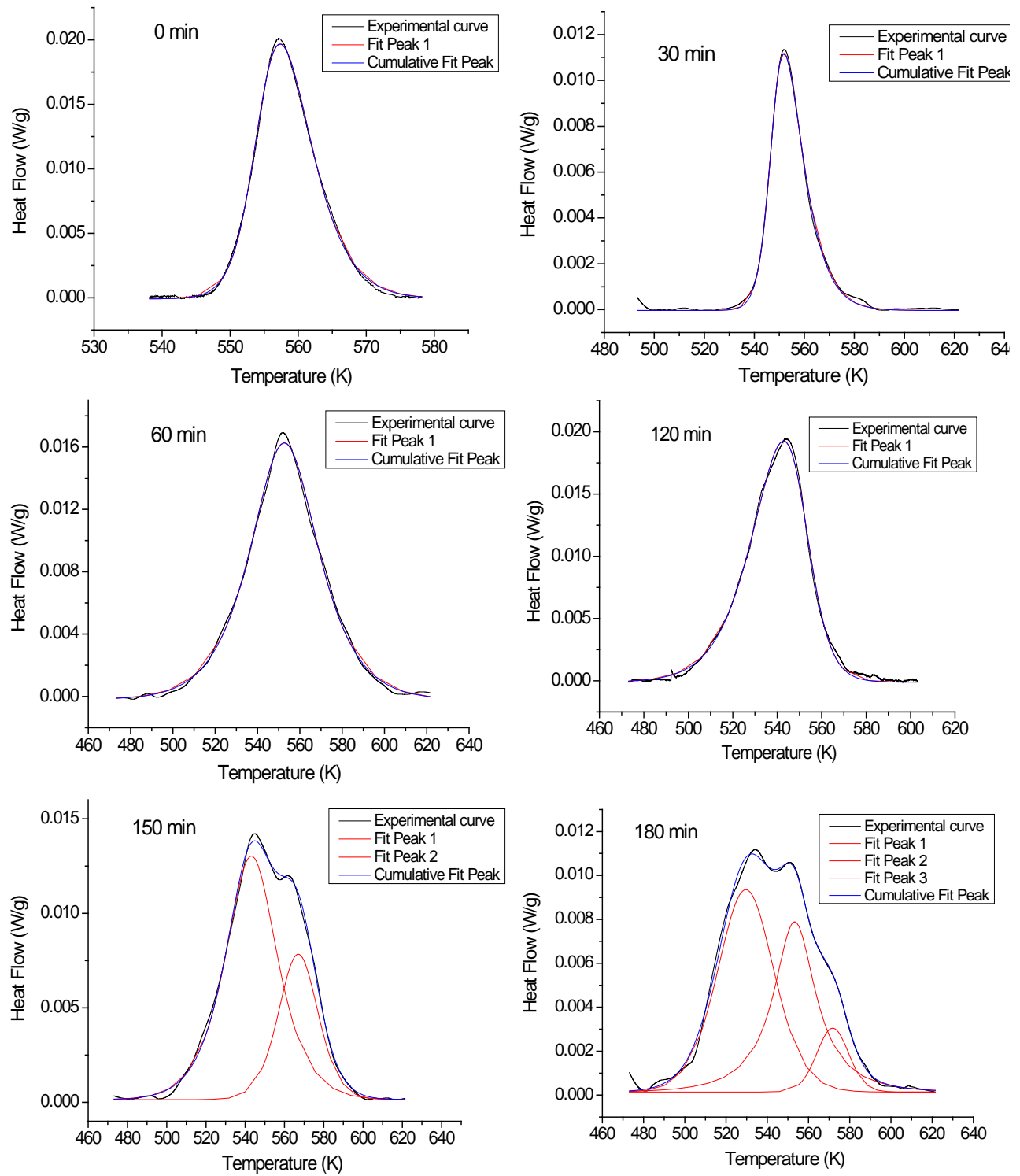


Figure S2. DSC peak fitting and deconvolution.